

ITEM	QTY	DESCRIPTION
1	1	MOTOR - 1750 RPM, INDUSTRIAL DUTY, HP PER ORDER, PAINTED FINISH
2	1	BEARING HOUSING - ALUMINUM, W/ HOLLOW BORE COUPLING, PAINTED FINISH
3	1	STAINLESS CLAMP MOUNT - BALL AND SOCKET TYPE
4	1	SHAFT - 316 STAINLESS STEEL SHAFT PER ORDER
5	1+	IMPELLER - 316 STAINLESS STEEL MARINE-TYPE IMPELLER, SIZE AND QTY PER ORDER

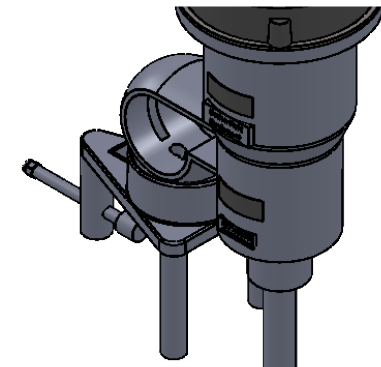
#### STANDARD FEATURES

- CAST ALUMINUM HOUSING
- DUAL OVERSIZE ABEC-RATED BEARINGS
- STAINLESS STEEL CLAMP
- STAINLESS STEEL HOLLOW BORE COUPLING
- STAINLESS STEEL HARDWARE

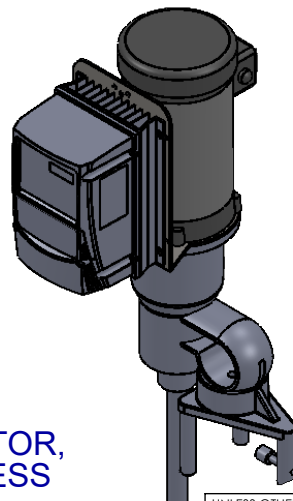
#### AVAILABLE UPGRADES

- 32Ra SANITARY FINISH ON WETTED PARTS
- EXPLOSION PROOF MOTOR (VFD IS NOT XP COMPLIANT AND IS SHIPPED LOOSE FOR MOUNTING IN A SAFE AREA IN COMPLIANCE WITH ALL APPLICABLE REGULATIONS.)

#### CLAMP MOUNT DETAIL



#### VFD MOUNT DETAIL



NOTE: ALL STAINLESS VERSION IS AVAILABLE  
STAINLESS STEEL VERSION INCLUDES: STAINLESS MOTOR, STAINLESS GEARBOX, STAINLESS HARDWARE, STAINLESS BEARING HOUSING (WITH VITON O-RING UPPER SEAL AND VITON LIP SEAL LOWER SEAL)

DRAWN	SB	DATE
CHECKED	DP	6/03/22
6/06/22		

PROPRIETARY AND CONFIDENTIAL

THE INFORMATION CONTAINED IN THIS DRAWING IS THE SOLE PROPERTY OF FUSION FLUID EQUIPMENT LLC. ANY REPRODUCTION IN PART OR AS A WHOLE WITHOUT THE WRITTEN PERMISSION OF FUSION FLUID EQUIPMENT LLC IS PROHIBITED.

WHILE FUSION FLUID EQUIPMENT LLC STRIVES TO MAINTAIN THE INTEGRITY OF A DESIGN AS APPROVED, FUSION FLUID EQUIPMENT LLC RETAINS THE RIGHT TO MAKE MODIFICATIONS DURING THE MANUFACTURING PROCESS TO IMPROVE FIT, FORM, AND FUNCTION OF THE DESIGN WITHOUT CUSTOMER NOTIFICATION OR CONSENT.

UNLESS OTHERWISE SPECIFIED:  
DIMENSIONS ARE IN INCHES.  
NO TOLERANCE IS IMPLIED.  
DO NOT SCALE DRAWING

<b>TITLE:</b> FUSION PRO PD-C DIRECT DRIVE - CLAMP WITH VFD		
<b>SIZE</b> A	<b>DWG. NO.</b> SALES-PD-#C-#-V#	<b>REV</b> B
<b>SCALE:</b> 1:16	<b>WEIGHT:</b>	<b>SHEET</b> 1 OF 1