

**NOTE: ALL STAINLESS VERSION IS AVAILABLE
STAINLESS STEEL VERSION INCLUDES: STAINLESS MOTOR,
STAINLESS GEARBOX, STAINLESS HARDWARE, STAINLESS
BEARING HOUSING (WITH VITON O-RING
UPPER SEAL AND VITON LIP SEAL LOWER SEAL)**

ITEM	QTY.	DESCRIPTION
1	1	MOTOR - 1750 RPM, INDUSTRIAL DUTY, HP PER ORDER, PAINTED FINISH
2	1	GEARBOX - 350 RPM, 5:1 REDUCTION, SYNTHETIC LUBE, PAINTED FINISH
3	1	BEARING HOUSING - ALUMINUM, WITH HOLLOW BORE COUPLING, PAINTED FINISH
4	1	STAINLESS CUP PLATE MOUNT - BALL AND SOCKET TYPE
5	1	SHAFT - 316 STAINLESS STEEL SHAFT PER ORDER
6	1+	IMPELLER - 316 STAINLESS HYDROFOIL IMPELLER, SIZE AND QTY PER ORDER

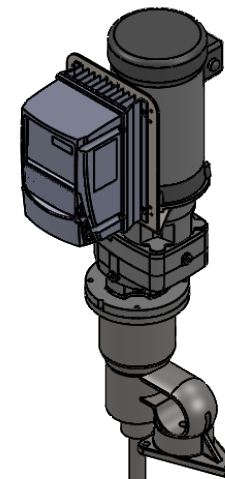
STANDARD FEATURES

- CAST ALUMINUM HOUSING
- DUAL OVERSIZE ABEC-RATED BEARINGS
- STAINLESS CUP PLATE MOUNT
- STAINLESS HOLLOW BORE COUPLING
- STAINLESS FASTENERS

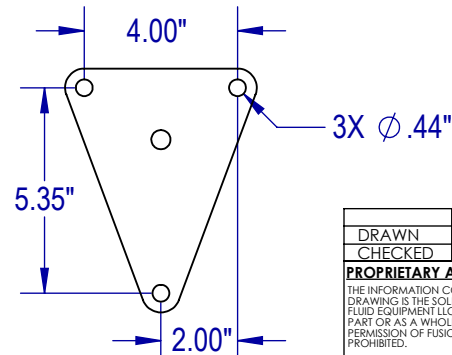
AVAILABLE UPGRADES

- 32 Ra SANITARY FINISH ON WETTED PARTS
- EXPLOSION PROOF MOTOR (VFD IS NOT XP COMPLIANT AND IS SHIPPED LOOSE FOR MOUNTING IN A SAFE AREA IN COMPLIANCE WITH ALL APPLICABLE REGULATIONS.)

VFD MOUNT DETAIL



CUP PLATE MOUNTING DETAIL



UNLESS OTHERWISE SPECIFIED:
DIMENSIONS ARE IN INCHES.
NO TOLERANCE IS IMPLIED.
DO NOT SCALE DRAWING

DRAWN	SB	DATE	6/06/22
CHECKED	DP	DATE	6/10/22
PROPRIETARY AND CONFIDENTIAL			
THE INFORMATION CONTAINED IN THIS DRAWING IS THE SOLE PROPERTY OF FUSION FLUID EQUIPMENT LLC. ANY REPRODUCTION IN PART OR AS A WHOLE WITHOUT THE WRITTEN PERMISSION OF FUSION FLUID EQUIPMENT LLC IS PROHIBITED.			
WHILE FUSION FLUID EQUIPMENT LLC STRIVES TO MAINTAIN THE INTEGRITY OF A DESIGN AS APPROVED, FUSION FLUID EQUIPMENT LLC RETAINS THE RIGHT TO MAKE MODIFICATIONS DURING THE MANUFACTURING PROCESS TO IMPROVE FIT, FORM, AND FUNCTION OF THE DESIGN WITHOUT CUSTOMER NOTIFICATION OR CONSENT.			

FusionExpress			
TITLE: FUSION PRO PG-U GEAR DRIVE - CUP PLATE VFD			
SIZE	DWG. NO.	REV	
A	SALES-PG-#U-#-V#	B	
SCALE: 1:16		WEIGHT:	SHEET 1 OF 1